

INVESTOR INFORMATION

(As of December 31, 2006)

Paid-in Capital

¥42,658,014 thousand

Number of Shares of Common Stock

Authorized: 800,000,000

Issued: 263,043,057

Number of Shareholders

14,923

Major Shareholders

Sumitomo Electric Industries, Ltd.	26.74%
Japan Trustee Services Bank, Ltd.	
(Trust Account)	8.95%
The Master Trust Bank of Japan, Ltd.	
(Trust Account)	5.66%
Sumitomo Corporation	3.65%
Citigroup Global Markets Inc.	2.04%
Mitsui Sumitomo Banking Corporation	1.98%
Nomura Securities Co., Ltd.	1.86%
The Goodyear Tire & Rubber Company	1.30%
Trust & Custody Services Bank, Ltd.	
(Securities Investment Trust Account)	1.29%
HSBC Fund Services SPARX Asset Management Co., Ltd.	1.28%

Stock Exchange Listings

Tokyo, Osaka

Ticker Symbol

5110

Transfer Agent

The Sumitomo Trust & Banking Co., Ltd.
5-33, 4-chome, Kitahama, Chuo-ku, Osaka 541-0041, Japan

Independent Auditors

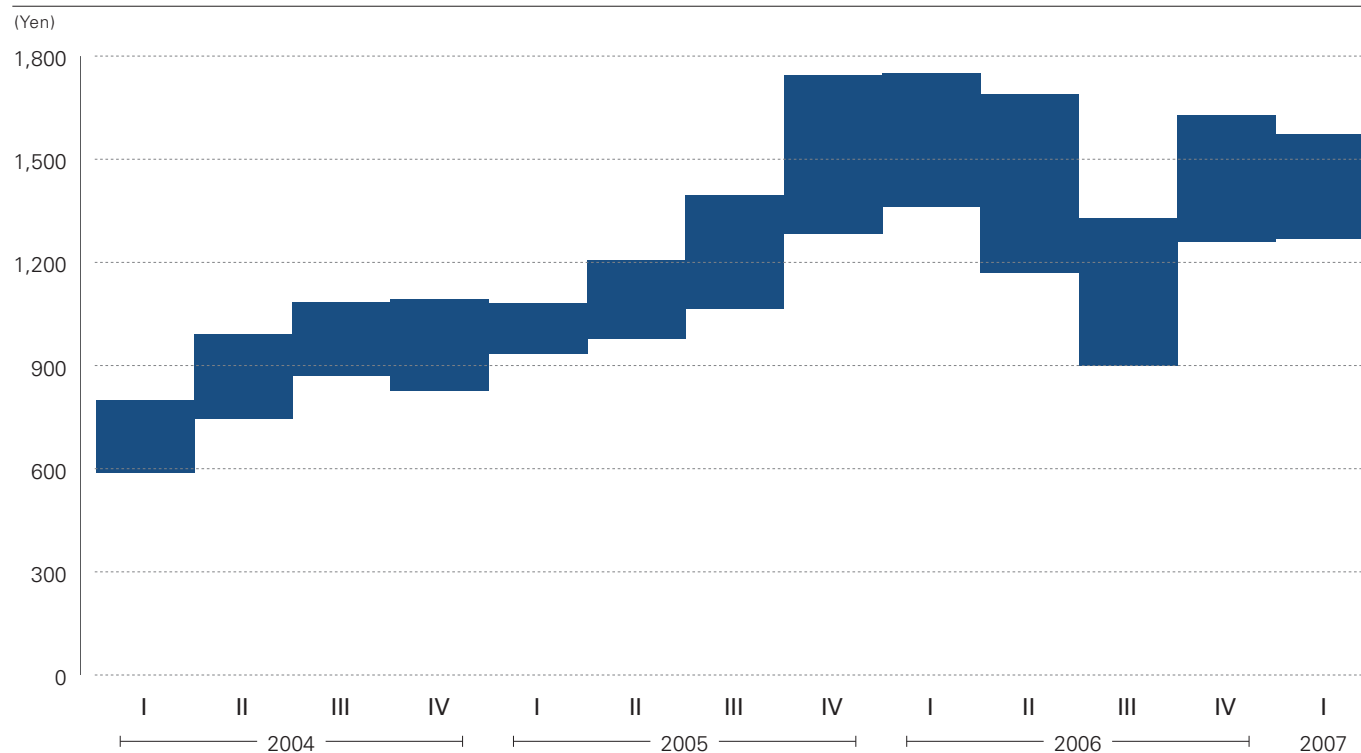
KPMG AZSA & Co.
3-6-5, Kawaramachi, Chuo-ku, Osaka 541-0048, Japan

Investor Relations

Sumitomo Rubber Industries, Ltd.
Public Relations,
Corporate Planning Department
3-6-9, Wakinohama-cho,
Chuo-ku, Kobe,
Hyogo 651-0072, Japan
Tel: (078) 265-3004
Fax: (078) 265-3113
e-mail: PR.az@srigroup.co.jp
<http://www.srigroup.co.jp/>

SRI Sports Limited
(Tokyo Stock Exchange 1st
Section, Ticker Symbol/7825)
Corporate Planning Department
3-6-9, Wakinohama-cho, Chuo-ku,
Kobe,
Hyogo 651-0072, Japan
Tel: (078) 265-3040
Fax: (078) 265-3135
e-mail: sri-sports.ir@sri-sports.co.jp
<http://www.sri-sports.co.jp/>

STOCK PRICE



 **SUMITOMO RUBBER INDUSTRIES, LTD.**

3-6-9, Wakinohama-cho, Chuo-ku, Kobe, Hyogo 651-0072, Japan

Tel: (078) 265-3004 Fax: (078) 265-3113

URL: <http://www2.srigroup.co.jp/english/>

 **SUMITOMO RUBBER GROUP**

This annual report is printed with our rubber blanket on recycled paper.

2,000-07-6 (157)

PRINTED IN JAPAN