

DIRECTORY

DOMESTIC OFFICES AND FACILITIES

Head Office

3-6-9, Wakino-hama-cho
Chuo-ku, Kobe
Hyogo 651-0072, Japan
Tel: (078) 265-3004
Fax: (078) 265-3113

Tokyo Head Office

Toyosu Center Bldg.
3-3-3, Toyosu, Koto-ku
Tokyo 135-6005, Japan
Tel: (03) 5546-0111
Fax: (03) 5546-0140

Facilities

Kakogawa Factory
Nagoya Factory
Shirakawa Factory
Ichijima Factory
Okayama Tire Proving Ground
Nayoro Tire Proving Ground
Golf Science Center

OVERSEAS OFFICES

Los Angeles Office

438 Amapola Avenue
Suite 100
Torrance, CA 90501, U.S.A.

Toronto Office

c/o Goodyear Canada Inc.
450 Kipling Ave., Toronto
Ontario M8Z 5E1, Canada

Atlanta Office

1850 Beaver Ridge Circle,
Suite D
Norcross, GA 30071, U.S.A.

Brussels Office

Park Lane
Cullinanlaan 2A
B-1831 Diegem
Belgium

Melbourne Office

c/o SPT Distribution Centre
O'Herns Road, Somerton,
Victoria 3062, Australia

Dubai Office

c/o EASA SALEH AL GURG
P.O. Box 325, Dubai, UAE

Jeddah Office

c/o BINZAGR COMPANY
P.O. Box 54, Jeddah 21411
Saudi Arabia

Singapore Office

1 Maritime Square
#09-58 World Trade Center
Singapore 099253, Singapore

Beijing Office

No. 905 Beijing Fortune Building
No. 5 Dong San Huan Bei Lu,
Chao Yang District
Beijing 100004, China

MAJOR SUBSIDIARIES

The Ohtsu Tire & Rubber Co., Ltd.

Izumiohtsu, Japan

Dunlop Goodyear Tires Ltd.

Koto-ku, Tokyo, Japan

Goodyear Japan Ltd.

Minato-ku, Tokyo, Japan

P.T. Sumi Rubber Indonesia

Jakarta, Indonesia

Oniris S.A.

Limay, France

Dunlop TECH GmbH

Hanau, Germany

Sumirubber Industries (Malaysia) Sdn. Bhd.

Sungai Petani, Kedah, Malaysia

Sumirubber Industries (Kedah) Sdn. Bhd.

Sungai Petani, Kedah, Malaysia

Zhongshan Sumirubber Precision Rubber Ltd.

Zhongshan, Guangdong, China

Srixon Sports USA, Inc.

Georgia, U.S.A.

Srixon Sports ASIA Sdn. Bhd.

Salangor Darul Ehsan, Malaysia

Srixon Sports Europe Ltd.

Alton, Hampshire, U.K.

MAJOR AFFILIATES

Goodyear Dunlop Tires Europe B.V.

Amsterdam, Holland

Goodyear Dunlop Tires North America, Ltd.

Akron, Ohio, U.S.A.

Goodyear-SRI Global Purchasing Co.

Akron, Ohio, U.S.A.



Nagoya Factory



Shirakawa Factory



Ichijima Factory



Kakogawa Factory



Izumiohtsu Factory (Ohtsu Tire)



Miyazaki Factory (Ohtsu Tire)



Sumi Rubber Indonesia



Sumirubber Industries (Malaysia)

CORPORATE DATA

BOARD OF DIRECTORS

Chairman
Naoto Saito

President
Mitsuaki Asai*

Executive Directors
Toshiyuki Noguchi*
Ryochi Sawada*
Akihiko Nakamura
Hisao Takahashi
Koji Soeda
Yasuyuki Sasaki

Directors
Norio Okayama
Samir G. Gibara
Tsunetoshi Yamaura
Hiroshi Okuno
Mikio Takatsu
Yoshinori Yamada
Hiroyuki Bamba
Takaki Nakano
Masatoshi Tsuchi
Takayuki Saimen
Susumu Shiotani

Auditors
Shigeki Okada
Hiroo Jikihara
Sumao Tokumasu
Kimio Toma

*Representative Directors

(As of March 28, 2002)

INVESTOR INFORMATION

Paid-in Capital
¥33,904,513 thousand

Number of Common Stock
Authorized: 800,000,000
Issued: 242,543,057

Number of Shareholders
10,206

Major Shareholders

Sumitomo Electric Industries, Ltd. ..	27.9%
The Goodyear Tire & Rubber Company	10.0%
Japan Trustee Services Bank, Ltd. .	5.4%
Shinsei Bank, Ltd.	4.0%
Sumitomo Corporation	4.0%
The Mitsubishi Trust and Banking Corp.	4.0%
Sumitomo Mitsui Bank, Ltd.	2.2%
Goldman Sachs International.....	1.9%
The Toyo Trust & Banking Co., Ltd. ..	1.7%
Trust & Custody Services Bank, Ltd. ..	1.5%

Stock Exchange Listings

Tokyo, Osaka, Nagoya

Ticker Symbol
5110

Transfer Agent
The Sumitomo Trust & Banking Co., Ltd.
5-33, 4-chome, Kitahama, Chuo-ku,
Osaka 541-0041, Japan

Independent Accountants

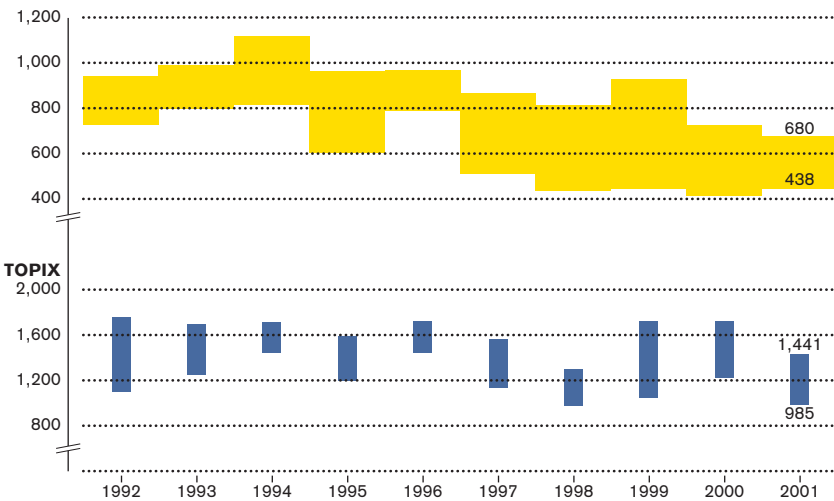
PricewaterhouseCoopers
Nihon Seimei Imabashi Bldg.,
7th Floor 3-1-7, Imabashi, Chuo-ku,
Osaka 541-8582, Japan

Investor Relations

Public Relations Department
Sumitomo Rubber Industries, Ltd.
3-6-9, Wakinohama-cho, Chuo-ku, Kobe
Hyogo 651-0072, Japan
Tel: (078) 265-3004
Fax: (078) 265-3113

(As of December 31, 2001)

Stock Price (Yen)



Zhongshan Sumirubber Precision Rubber Ltd. (China)

 **SUMITOMO RUBBER INDUSTRIES, LTD.**

3-6-9, Wakinohama-cho, Chuo-ku, Kobe, Hyogo 651-0072, Japan

Tel: (078) 265-3004 Fax: (078) 265-3113

